

SCUTTLEBUTT

NEWSLETTER OF THE CANBERRA MODEL SHIPWRIGHTS SOCIETY

Established 21 April 1988. Incorporated 16 January 1991

OBJECTIVES: To foster and maintain interest in building model ships, boats, associated fittings, gear, equipment, armaments and relevant items and structures and the pursuit of excellence in this field.

September 2024

Canberra Model Shipwrights Society



EXPO 2024

Exhibition of Model Ships



Sat 14 September 2024 - 10 am to 4 pm

Sun 15 September 2024 - 10 am to 3 pm

**Mount Rogers Primary School
Alfred Hill Drive, Melba, ACT**

Model Ships on display by members of:

Canberra Model Shipwrights Society, ACT Scale Modellers Society
Task Force 72, and Sydney Model Ship Builders Club

INSIDE

President's Report
HMS Lyde
Pacific Gas
Victory
Traveller's Photos
Shanendoah Prototype
Endeavour Longboat
Maori War Canoe
Veteran's Handover
For Sale



COMMITTEE MEMBERS 2023-24

President Bob Evans, Vice-President Neville Miller, Secretary Peter Gaisford, Assistant Secretary Bill Atkinson, Treasurer Peter Hateley. Members - Tony Merriott, Peter Higgins, Greg Peters-remote member. Appointments made by Committee: Public Officer Ray Osmotherly, Member Liaison Max Fitton, Webmaster Steve Batcheldor, Newsletter Brian Voce

Gatherings

The Society meets, until further notice, at the Men's Shed at Melba on the third Tuesday of each month (except December).

Society Web-page

Visit our website at:

<https://canberramodelshipwrights.org.au>

Instructions for using this website are on the site itself where members will need to register. The webmaster will help you in any way possible. We seek content for the website - everything from photographs of your models through interesting web-links and chat.

Society Facebook Page

The Society has a Facebook group to promote the Society and to attract new members. So please feel free to post items on the page and share it with your Friends. <https://www.facebook.com/canberramodelshipwrights>

Annual Membership: Canberra Area-Single \$35, Couple \$50, Country/Interstate-Single \$20, Couple \$25.

Payment Details:

By Cash to Treasurer

Post by Money Order to: c/- 5 Stretton Crescent, Latham, ACT, 2615, or

Bank Deposit to: Beyond Bank - BSB 325185
Acct Name - Canberra Model Shipwrights Society (or CMSS)

Acct No. 03452396.

At meetings, payments may be made using an EFTPOS terminal held by the treasurer.

President's Report

Time is certainly passing much faster than I thought and I have just realised that it is nearly six months since I last wrote in the Newsletter. My thanks to Neville for his contribution to the last NL; well done and I agree with the sentiments you expressed. In particular I would be keen to encourage more social participation with wives and partners joining in. I would encourage a few such occasions during the year, so let's do it.

Any partners who would like to pop along to a meeting would also be most welcome at any time.

Foremost on our minds at present is EXPO24 in September and my thanks to those actively involved in the preparation for this event. We have a lot of models being presented by the CMSS and by our compatriots in the ACTSMS, Task Force 72 and the SMSC, so thanks to those who are travelling to Canberra to make this event the success we are all working towards. If you haven't done so already, please advise Secretary Peter of your intentions so the necessary preparations can be made.

Needless to say we are very grateful to Mount Rogers School for their continued support for this event. Without that support it would be very difficult to have an EXPO at all.

By way of something different the CMSS will be attending the ACT Seniors and Better Ageing Expo which is to be held at the Old Kingston Bus Depot on September 25th. Given the vintage of a majority of Members, our attendance seemed appropriate!

New Members are always welcome and this event provides a great venue to demystify the hobby and encourage people to see what this pursuit can offer in the way of providing an engrossing and satisfying activity across a range of skills and subject matter.

Pay us a visit at this event and of course whet your appetite with a visit to EXPO.

Best wishes,

Bob Evans President

HMS LYDE- 1787



PETER GAISFORD rescues plans from a skip and builds a new model

A model produced by Euromodel in Milan, this ship represents a typical top-sail schooner of the period 1787 on to 1810 at the time of the battles between France, Spain and England. I have not been able to find a listing in the Royal Admiralty records of such a ship, so I assume it represents a typical schooner ship of the time without impinging on any specific model copyright.

It is a bluff bow two-masted four-gun ship, so not formidable in battle; its role would be scouting and resupply of ships of the line. Because of its gaff sails it was able to sail close to the wind and would be able to evade larger ships.

The ship came to me via a set of plans that were thrown in a skip and retrieved by myself, so skip

diving can be useful. Since all I had were the plans, in Italian, it was scratch-built, following a side and top view plan. This got to be misleading when determining the curve of the bluff bow and stepped stern as perspective is distorted in side views.

Midway through the build I found a modeller named Pirate Pete in Adelaide who had all the Euromodel kits and built them and produced build logs on behalf of the company. What a small world! He was able to provide guidance, and informed me that Euromodel kits typically did not supply cut parts, merely blank sheets to be traced and cut by the modeller, so no great improvement on my build.

All the fittings are a hodge podge of parts from similar kits, or scratch-built to match the plans.



Pacific Gas

AT LAST –THE LAST PART!

The “Pacific Gas” is finally completed – well, all bar a few minor details which will be completed in time for EXPO and certainly won’t warrant yet another article!

Still to go are a couple of short lengths of handrail and the lifeboat falls. Making the fall blocks has held me up considerably so I have purchased some from Float-a-Boat and as soon as they arrive I will put them to good use.

A new stand has been made so we are ready to make a debut at EXPO in a few short weeks.

What’s next? My eldest son would like a model of the “Coral Gas”.....!

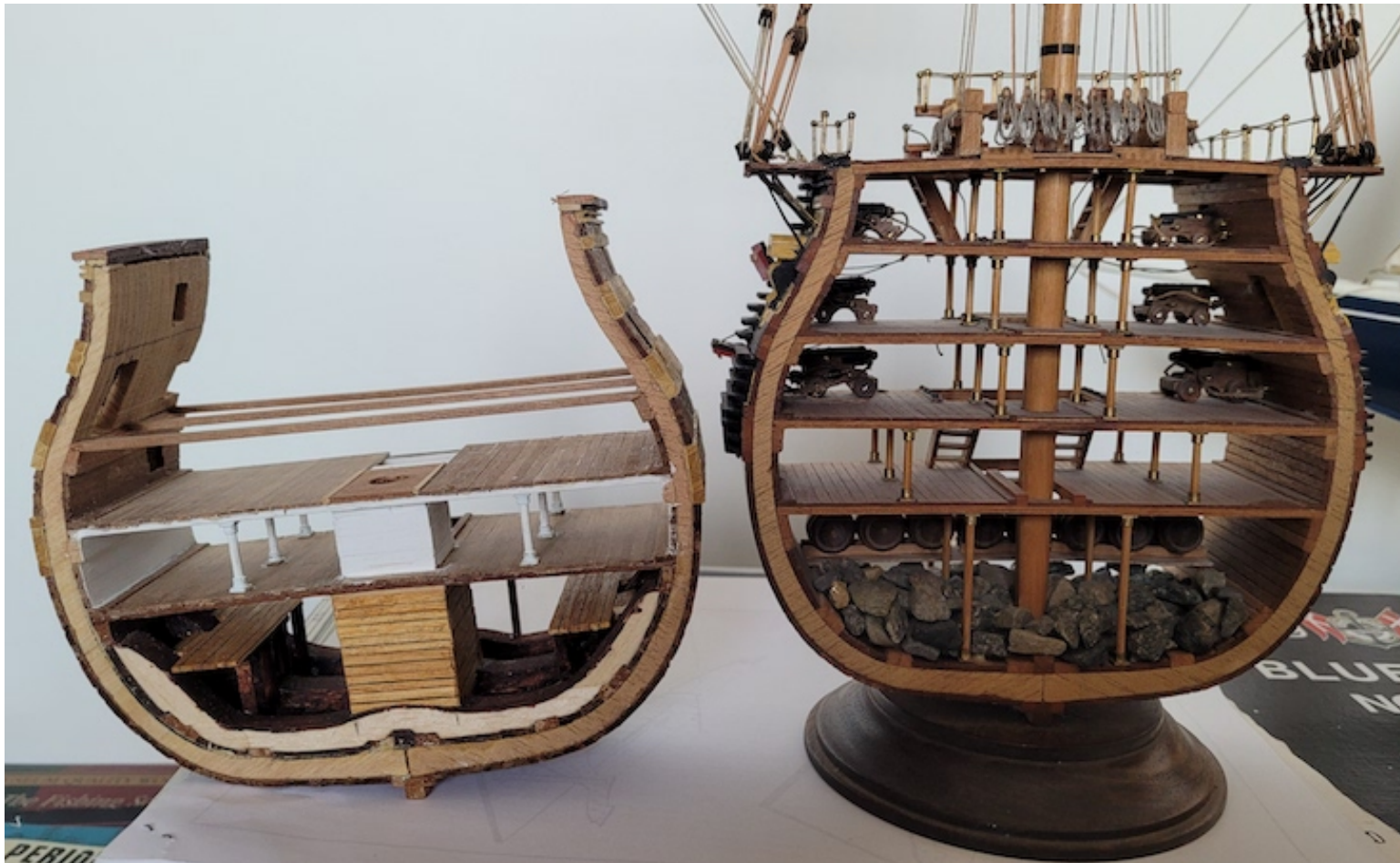
Watch this space! - **BOB EVANS**

Photos show the completed Pacific Gas and right the Coral Gas, Bob’s next model?



Corel 1:98 scale, sectional model of HMS Victory

Neville Miller



I enjoy the challenge of salvaging uncompleted kits...

I purchased a Corel 1:98 scale, sectional model of HMS Victory that had already been started. Most of the kit was in the box and the parts that were missing, I could scratch build.

Having studied the anatomy of the HMS Victory, I found that the plans that came with the kit have no resemblance of how the lower decks should look like.

I have decided to build the model to resemble the ship in her true image to the best that my skills will allow.

The kit plans show the ballast as rocks, I have not been able to find what ballast was actually used other than this is the area of the ship in which the water barrels were stored. I am assuming that the water barrels were the ballast until I find information that states otherwise.

I am adding the well to the two lowest decks and

putting the pumps on the lower gun deck, with the main mast within the well.

The guns and gun carriages that came with the kit are not the correct scale and do not look right when placed on the deck. I may have to make some.

I have included photos of my model alongside the club's finished model of the same kit for comparison. The club's model of the sectioned HMS Victory will be on display at the coming CMSS Expo. I'm hoping to have my model finished in time for the 2025 Expo.

I enjoy the challenge of salvaging uncompleted kits and finishing them as they are rarely complete and it forces me to try my hand at scratch building.

This is a very good and fun kit for beginners and those who are not after historical accuracy.

Our man in the CMSS annex, UAE, has been on the road again, and has sent us a few holiday snaps to whet the whistle...

MATT SHEPLEY

reports



The ever impressive Vasa, Stockholm (above) Scale model beside original (below)



Below left - Over she goes...one of many great models in the Vasa Museum which includes a series depicting the excavation and raising - sadly too dark to photograph.

Below - Puddening up close!





Stockholm usually has tall ships in harbor. This one available for charter (Brig Tre Kronor, 2005)



And this one (of Chapman, 1888), now a youth hostel

Over to Edinburgh, Scotland and a tour of the Royal Yacht Britannia, modelled below. More next page...





From the top -
Queen's boudoir!

So much history, including walls adorned with gifts from abroad

And a sandwich and coffee fit for Royalty.



Your chance to own a prototype model of the Shenandoah

This model of the CSS Shenandoah is the prototype of the recently introduced very high quality kit produced by Modellers Central, an Australian company.

The model was very generously donated to the Canberra Model Shipwrights Society by Modellers Central for use as a fundraiser for the Society and you are invited to submit your bid at Expo 24 by filling in the details on the form provided and placing in the box provided.

As a guide the kit retails for A\$780 and this will be set as the reserve.

Formerly Sea King and later El Majidi, she was an iron-framed, teak-planked, [full-rigged sailing ship](#) with auxiliary [steam power](#) chiefly known for her actions under Lieutenant Commander [James Waddell](#) as part of the [Confederate States Navy](#) during the [American Civil War](#). (Courtesy Wikipedia)

The CSS Shenandoah docked in Melbourne on January 25, 1865. During its visit 42 Melbourne men secretly joined the Shenandoah's crew before it was sailed back out to sea to continue its attacks on the way to the US, providing a rare Australian link to the war.

BOB EVANS



Enjoying Smaller Boat Modelling

HMB Endeavour
Longboat
by Tony Merriott

1



This was the first of several small boat models I built as a means of getting back into modelling after the pandemic and a medical issue that kept me out of modelling for a while. It was while building this model that I realised how much I enjoyed building these smaller models, having only built large-scale models previously.

HMB Endeavour

Longboat/ Captains Launch

Scale 1:25

L420mm x W90mm x H270mm

Photo 1 - This long boat belonged to the HMB Endeavour which was a British Royal Navy research vessel launched in 1764, then chosen by Lieutenant James Cook. Cook was tasked with a voyage of discovery commencing in August 1768 to observe the transit of Venus and then with orders to seek out the Antipodes, resulting in his “discovery” and mapping of New Zealand and the east coast of Australia. Many new and unique fauna and flora samples were collected and catalogued on these

voyages that Cook undertook before he was killed during a dispute on 14th February 1779 at Kealakekua Bay in the Sandwich Islands, the present day Hawaii.

2



Photo 2 Shows various stages of planking showing Basswood primary planking followed by both Basswood and Sapele veneer. Note the primary basswood was stained to minimise any show through on the veneer joints.

3



Photo 3 - The completed sapele planks were stained with maple tint to redden and take the dull purple hue out of the veneer. The Rubbing Strakes and Gunwale were stained with a mix of PNA glue and Indian Ink. The hull was then polished with oil and steel wool.

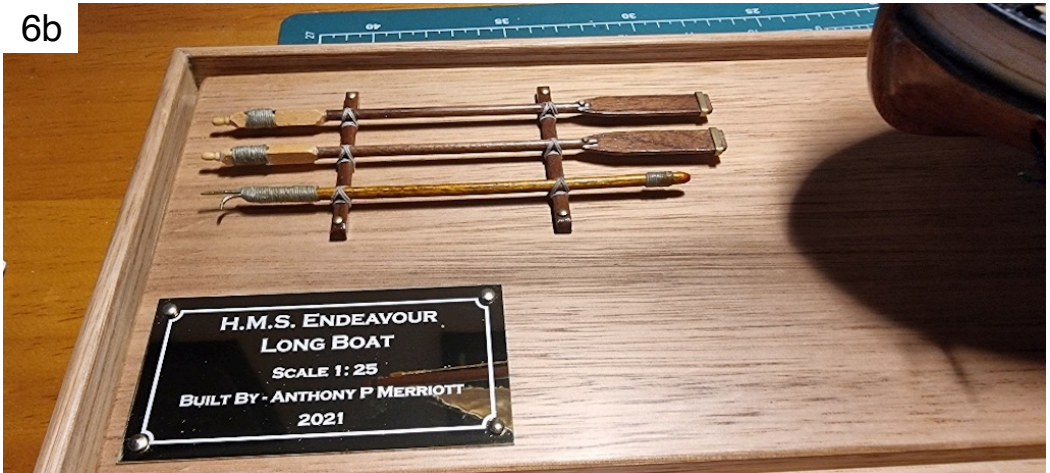


Photo 4 - The hull with completed duck boards.

Photo 5 - The completed hull

Photos 6, 6a, 6b show various fittings/decorations

These photos show Tony's
finished model
of HMB Endeavour's longboat



We Now Have A Maori War Canoe

Ray Osmotherly Tells the Story



Recently a member of the public contacted CMSS to tell us that her husband had a model of a Maori war canoe, presented to him at the end of a term of office with a New Zealand sporting organisation. She asked what they could do with it as they no longer had enough room in their house. She decided to donate it to CMSS.

When the model was shown to members no one was aware of the significance of such a model and thought it was a strange design.

I decided to look into this and what I found was most interesting and gave some idea of the customs of the Maori people.

The first thing I discovered was that such a model is made only by skilled Maori wood carvers and is something that is presented to important people on leaving a particular place. The model that CMSS was given was a metre and a half in length.

What I Found in my Research:

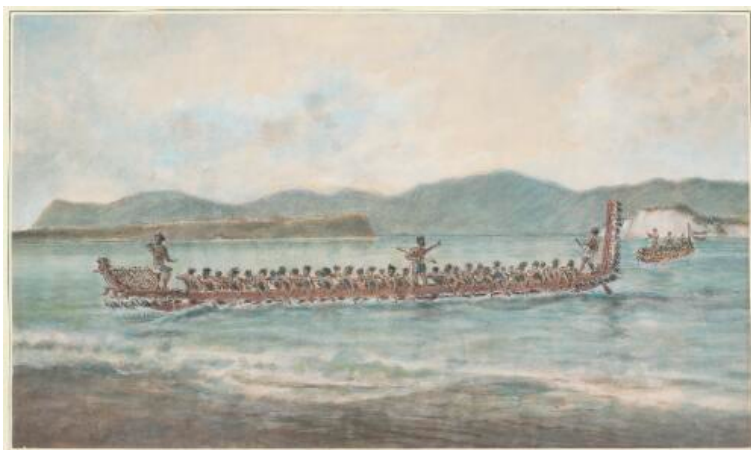
This is based on an article in "TOTA curated archives" "To the Polynesians the canoe was of necessity their most valued possession, and in its highest development was a noble and beautiful object being admired by the early visitors to New Zealand, as much for its sea-going qualities as for the beauty of its ornamentation. A full war canoe (Waka-taua) is in the Auckland museum."

WAR CANOES were the largest and most important of the various canoes built by the Maori people and could reach up to 24 metres in length. They were used to transport warriors in times of conflict and possibly also for the ritual transfer of ancestors' bones to burial sites. A model, over 3 metres long was presented to the Duke and Duchess of Cornwall and York (later King George V and Queen Mary) in 1901, when they were touring New Zealand This is in the Royal Collection, London. In 1936 members of the Nga Phuī tribe wanted to present George V, who was to revisit New Zealand, with a full size war canoe.

They felled an immense kauri tree, but unfortunately the

King died before the planned visit and the huge log remained in the forest for the next 20 years.

In the 1960s the tribe decided to revive the canoe project and present the canoe as a present for a new Polynesian Culture Centre in Hawaii. They roughed out the canoe hull and carted it to near Hamilton, New Zealand. (continued next page)



Maori war canoes coming across harbour for entertainment at the Military camp, New Zealand, Christmas, 1865 [picture] / H.G. Robley

National Library of Australia - Maoris, New Zealand, 1864-1896.



This is the central panel of the prow of an 18th century Maori war canoe. It is considered to be the best surviving example of the type known as tuere, with a separate splashboard and a triangular base fitted on to the central panel. - Photo Copyright Western Australian Museum.

THE MAKING OF A WAR CANOE: A noted Maori carver, Piri Poutapu, and his team did most of the waku (war canoe) carving.. Traditionally the waka could only be constructed by important men of the tribe who laboured, like slaves, at the heavy task of shaping from the rough log.

The traditional “waku” had a carved head ornamented with brown feathers . A double pronged fork projected from it and on which the heart of their slain enemy was fixed.

The canoe and fittings were painted a fine red colour made from kokowai, a red ochre or oxide of iron mixed with shark oil. In the north they were generally painted black.

The inside of the canoe was fitted with a flooring or grating of small rods. The thwarts (taumanu), for the paddlers were often lashed, to the top sides and acted as braces. The canoe paddles were frequently carved at the ends and in the middle. They were mostly weapons of ceremony and used by chiefs in the war dance.

The sails (ra, or mamaru) of the canoe were used in

favourable weather and consisted of a triangular mat made from leaves

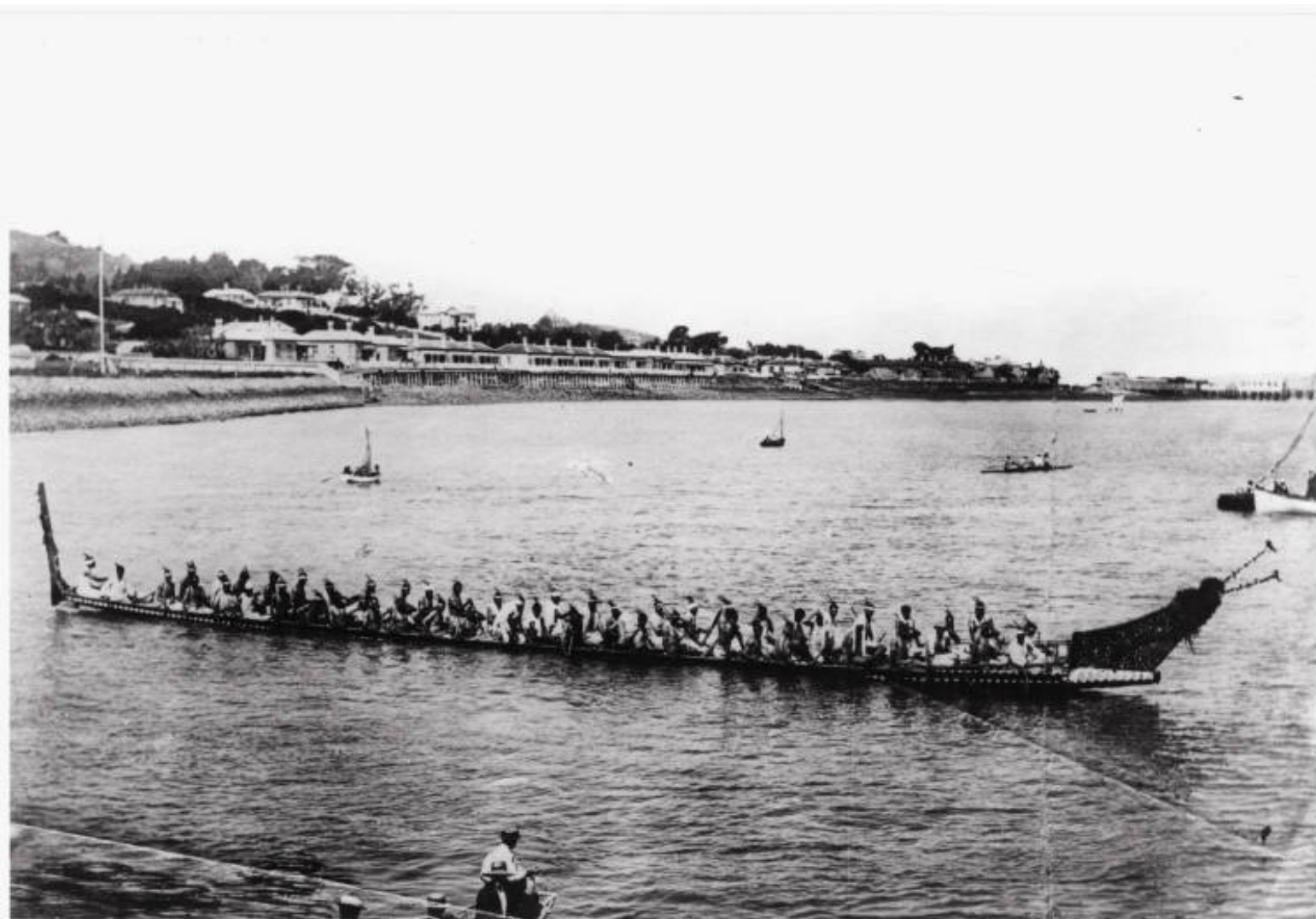
With each task in making a traditional full-sized canoe, a ritual chant, different for each stage, was made. These were known as “Karakia”

The Karakia used in felling a tree was “tua”, in drawing out of the bush “to-to-waka”, another for giving power to the axes..

There were also Karakias for the naming of the canoe. The priest sprinkled the canoe with water. In early times the ceremony was accompanied by the sacrifice of a slave.

The war canoes could be as long as 24 metres.

In 2019 Prince Charles and Camilla, visited New Zealand and were met by a fleet of war canoes. Prince Charles had to wave a particular rod with attached feathers, to be ‘accepted’. Before he was accepted he was challenged by the warriors who poked out their tongues indicating “We will eat you !”



Maori war canoe Taheretikitiki off Devonport, New Zealand in the 1890s. Photo - Courtesy Auckland Libraries Heritage Collections D-TWS-0010

Veteran Model-Maker Passes On His Craft

Longtime model shipbuilder, Richard Uttley, 90, (pictured right) has donated a number of his models in a bid to find new homes for them. Born in Mosman, Sydney, in 1934, he and his wife retired to the Gold Coast in 1994 where he worked on his boats and tapestries until recently. His son Chris Uttley recalled that about 16 years ago, he started losing the ability to do small works due to his hands, but he continued working on his boats as best he could. Some of his works will be available at Expo for those who are keen to finish or rehabilitate them.





Models Available

Having downsized, I now find I have some model kits desperately looking for a nice new home and display shelf.

Kits available at the time of writing include:

Euromodel. H.M.S. Mordaunt (4th Rate English Vessel of 1681). (Pictured)

Construction ref. 99/100 & Building Plans ref. 66/010

This is truly a magnificent model of museum quality. Unfortunately, the Euromodel company has ceased to exist, so samples of its kits are very difficult to find.

The kit Includes translated instructions, 11 sheets of drawing and an article titled “An interpretive build of the Mordaunt” relating to hull construction.

The kit has excellent stern, galleries and bow die-cast metallic ornamentation. In fact, you could just even make an excellent model of the “rear” section alone. However, the test for this model is if you can lift the box which weighs 6Kg!

Scale: 1:60

Max. length 920mm, hull length 745mm

Max width 470mm, hull width 185mm

Max height 770mm

Contact me if you are interested: **BRUCE KIRK**

Canberra Model Shipwrights Society



EXPO 2024

Exhibition of Model Ships



Sat 14 September 2024 - 10 am to 4 pm

Sun 15 September 2024 - 10 am to 3 pm

**Mount Rogers Primary School
Alfred Hill Drive, Melba, ACT**

Model Ships on display by members of:

Canberra Model Shipwrights Society, ACT Scale Modellers Society
Task Force 72, and Sydney Model Ship Builders Club